

DREAMWORKS

GABBY'S DOLLHOUSE

MEOWSEUM
DISCOVERY DAYS



ADMINISTERED BY THE ASSOCIATION OF CHILDREN'S MUSEUMS

Walking Water Spa

with MerCat

You will need:

- 5 clear plastic cups
- Water
- Food coloring
- Chopstick
- 4 half-sheet paper towels

Instructions:

1. Ask an adult for help!
2. Line up cups in a row.
3. Fill cups 1, 3, and 5 with equal amounts of water. Cups 2 and 4 will remain empty.
4. Place a few drops of food coloring in each cup. Choose any color you like, but be sure to use a different color for each of the 3 cups.
5. Stir each color with chopstick to distribute color evenly.
6. Fold each half-sheet paper towel into a narrow strip about one inch wide.
7. Fold each paper towel in half lengthwise to form a "V" shape. The V should be only slightly taller than your cups.
8. Use one paper towel to connect each pair of cups. To do this, flip the V shape upside-down and put one end in each cup.

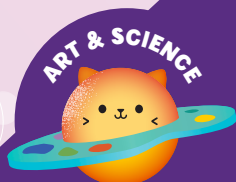
WAIT AND SEE!

Look closely at the ends of the paper towels that are in the cups with water. What do you notice?

What do you see after 20 minutes of letting the cups sit?

What do you see after 2 hours of letting the cups sit?

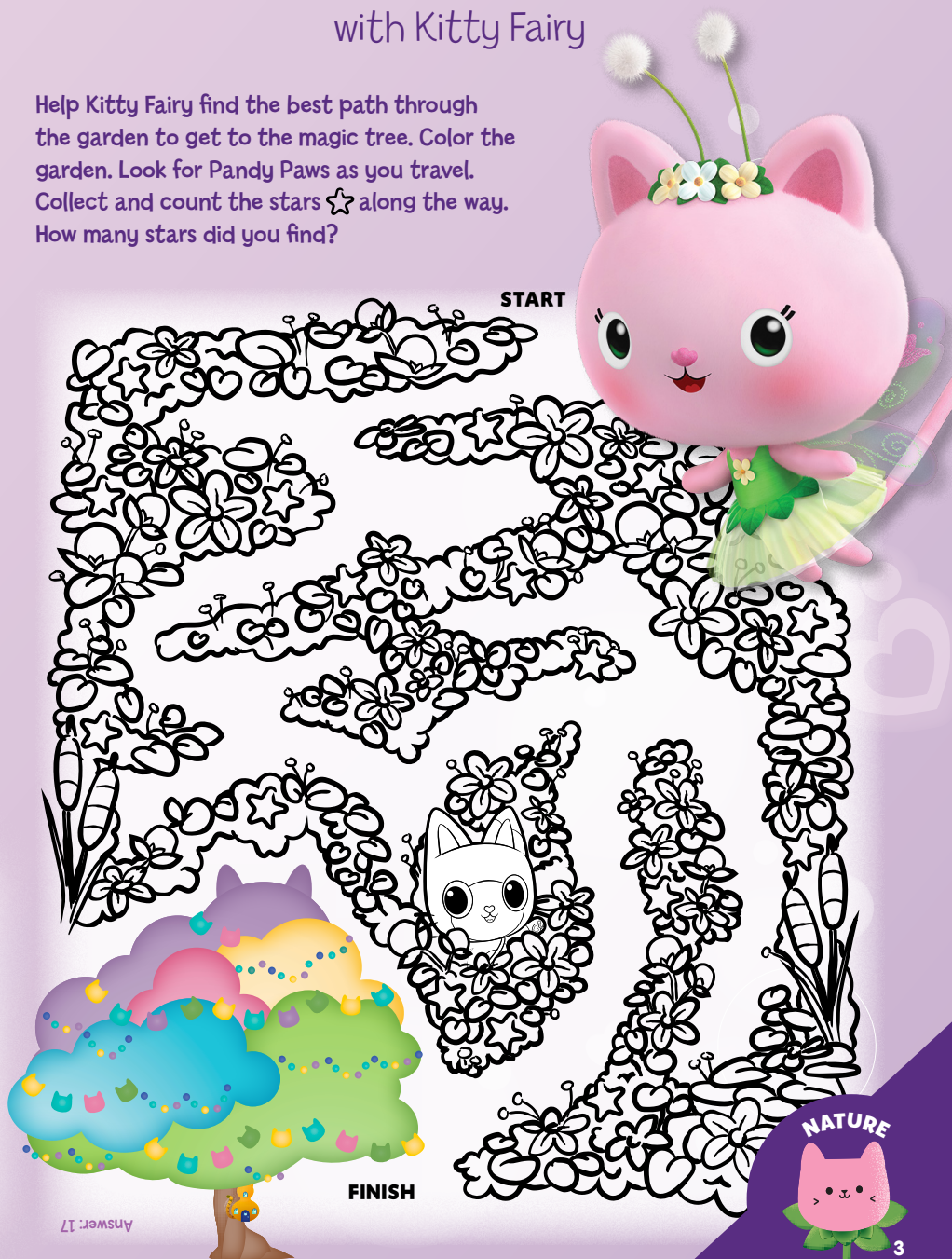
How does your experiment look after 24 hours?



Botanical Garden Adventure

with Kitty Fairy

Help Kitty Fairy find the best path through the garden to get to the magic tree. Color the garden. Look for Pandy Paws as you travel. Collect and count the stars ☆ along the way. How many stars did you find?



DREAMWORKS GABBY'S DOLLHOUSE



GABBY'S CELEBRATION DOLLHOUSE

Dive into cat-errific adventures in Gabby's Celebration Dollhouse, a 2-foot-tall rainbow-themed wonder with a 3.5-inch Gabby Girl figure, meow-mazing furniture, and 10 unique accessories including a kitty toilet and a Piano/DJ Table. Dance, use the Cat-A-Vator to travel between 3 floors, party on the rooftop, unbox dollhouse deliveries to discover surprise toys, and enjoy thrilling sound effects from the show!

MOVE & GROOVE DANIEL JAMES DJ CATNIP PLUSH TOY

Create never-ending pretend play adventures with the Move & Groove Daniel James DJ Catnip Plush Toy! At 10-inches tall, he's the purrfect size for on-the-go play, and for snuggling up to when it's bedtime! This premium plushie also features super-soft arms, that wave up and down when you squeeze his belly, so he's always ready to move and groove when its time to party! For even more purr-ific playtime adventures, look for the Fin-tastic MerCat plush, with her flapping mermaid tail, to make sure the fun never ends!



SLEEPY TIME PANDY PAWS PLUSH

Create memorable Gabby's Dollhouse adventures with the Sleepy Time Pandy Paws Bedtime Plushies! This adorable plush toy is dressed in his super-cute pajamas and can't wait to accompany you to dreamland! At over a foot tall, Pandy is the perfect size for both playtime and naptime! Squeeze Pandy's belly to activate the lights in his cheeks, to watch him glow in the dark at bedtime!

IT'S A CAT-TASTIC TOY CELEBRATION!

KITTY CARE EAR PURRFECTION PLAYROOM

Create exciting babysitting adventures with Gabby and the baby kitties, in the Kitty Care Ear Purrfection Playroom! This 17-piece playset features a Gabby girl figure, 3 baby kitties and a nursery playset that's full of surprises! Take turns going down the slide, enjoy walks in the pushcart, use the high chair at mealtimes, then unbox a dollhouse delivery to discover a surprise toy before scanning the QR code in the delivery to unlock a reward in the Gabby's Dollhouse App! After playtime, tuck them into their bassinets and rock them to sleep.



FIN-TASTIC MERCAT PLUSH

Create never-ending pretend play adventures with the Fin-Tastic MerCat Plush Toy! At 10-inches tall, she's the purrfect size for on-the-go play, and for snuggling up to when it's bedtime! This premium plushie also features super-soft fur, and a shimmery tail that waves up and down when you squeeze her belly, so she's always ready to shimmy and shake when it's time to party! For even more purr-ific playtime adventures, look for the Move & Groove Daniel James DJ Catnip Plush Toy, with his flapping arms, to make sure the fun never ends!



PARENTS, SCAN TO SHOP THE
GABBY'S DOLLHOUSE TOY COLLECTION!

GABBY'S PARTY ROOM PLAY SET

Discover the magic with Gabby's Party Room Playset, featuring 4-inch Skater Gabby and Marty the Party Cat figures with working roller skates! Decorate with meow-mazing furnishings and engage in satisfying sensory play with fidget toys on the wall. For even more excitement, combine the Party Room with both versions of Gabby's Dollhouse, by attaching it to the attic, to raise the dollhouse to 4-stories tall!



Speedy Sprinkle Cake

with Cakey

You will need:

- 1 tsp Butter
- 1/4 cup Flour
- 2 Tbs Cocoa powder
- 1/4 tsp Baking powder
- 2 Tbsp White sugar
- 1 Egg
- 1 Tbsp Water
- 1 tsp Vanilla extract
- Sprinkles (optional)

Instructions:

1. Ask an adult for help!
2. Assemble all ingredients
3. Place butter into microwave-safe mug.
Microwave for 30 seconds (until butter is fully melted).
4. Add flour, cocoa powder, baking powder, white sugar, egg, water, and vanilla to mug. Mix with whisk or fork until a smooth batter forms.
5. Microwave for 75 seconds. Your cake should have a firm top. If needed, microwave for 5 second intervals until done.
6. For an extra fun and colorful cake creation, decorate with sprinkles.
7. Enjoy warm and eat with a spoon!

DON'T FORGET THE TOOLS!

- Microwave
- Microwave-safe mug
- Small whisk or fork
- Spoon for eating





DREAMWORKS LAND

UNIVERSAL ORLANDO RESORT

The all-new DreamWorks Land is finally here!

Let your imagination soar as your favorite characters from Shrek, Trolls and Kung Fu Panda come together in one colorful new land at Universal Studios Florida. Meet Shrek and splash in his swamp. Scream with laughter on the Trollercoaster. Learn kung fu with Po. Plus, ignite your sense of wonder with the new live show DreamWorks Imagination Celebration.

NOW OPEN!



CALLING ALL GABBY CATS!

Express Gabby's style your way!
Find all of these and more at your favorite retailer.



Advertisement

DREAMWORKS
**GABBY'S
DOLLHOUSE**